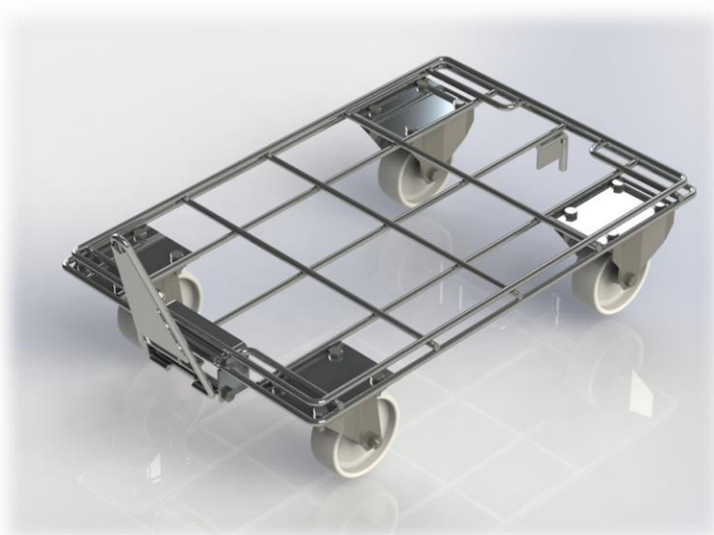


TOWING TRUCK CH064005



Size (mm)	Ext.	Int.
L	600 and 815 with the drawbar	568
W	400	368
H	154	154

- ✓ **Finishing Wheels:** Polyurethane flexible or polyamide \varnothing 100 mm
- ✓ **Drawbar :** Galvanised steel
- ✓ **Maximum load:** 250 kg

