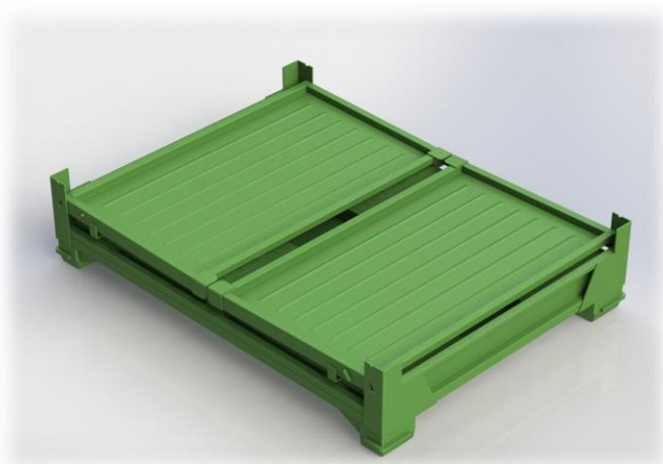




CONTAINER DI 201

Heavy-duty containers designed to handle heavy products such as foundry output, screx-cutting equipment, etc,



Size (mm)	Ext.	Int.	Folded
L	1600	1510	1600
W	1200	1110	1200
H	1007	830	370



1 Truckload = 112 units

- ✓ **Finish** : Paint RAL 6018
- ✓ **Maximum load** : 1000 kg
- ✓ **Stack** : 5/1